

**We tell you that you have to leave...**

**Early arrival of unborn child...**

**Your child will need emergency medical care outside the islands...**

## **BEFORE LEAVING**

1. Request information from the transport office on ENVOL Assistance Funds.
2. Where needed, contact the possible accommodation facilities located near the hospital where you are being transferred to:

### **Ste-Justine (Montréal)**

Hôtellerie Cachou, tel.: 514 345-4984 or 514 345-4616 (nights and weekends)

Ronald McDonald House, tel. : 514 731-2871

### **Enfant-Jésus (Québec)**

Hospital information office : 418 649-0252

### **CHUL (Québec)**

Directory available at the hospital transportation office :  
418 986-2121, extension 8412

### **CHUL - Ronald McDonald House**

2747, boul. Laurier Ste-Foy 418 651-1771

3. Remember to bring your I.D. cards, health insurance cards, health records, etc.

## **WHILE STAYING AT THE HOSPITAL OUTSIDE THE ISLANDS**

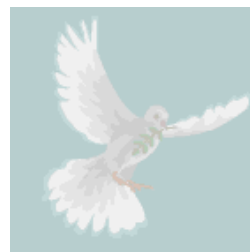
- **Do not hesitate** to ask the nurse or your attending physician (pregnant women) or your child's attending physician to meet with the social worker at the hospital so as to receive as much information as possible and to set your mind at rest.
- Ask for accommodation receipts (regardless of whether you are staying with friends or family).
- Keep your taxi, gas, parking and meal receipts.

## Who to contact **UPON YOUR RETURN TO THE ISLANDS** ?

- ◆ For your child's medical follow-up: *your attending physician*
- ◆ For the follow-up of your child's development or for vaccination purposes: *the local parenting and child health nurse at CLSC des Îles (for children 0 to 5 years of age)*
- ◆ For support and to find out which specialized assistance programs and resources are available depending on your child's situation, *contact psychosocial services at CISSS des Îles, by calling the CLSC at: 418 986-2572.*

**Centre intégré  
de santé  
et de services sociaux  
des Îles**

**Québec** 



## **ASSISTANCE FUNDS L'ENVOL**

### **Application form for information and financial assistance for the following components:**

- **MEDICAL TRANSFER**
- **ASSISTANCE**

### **THE HEALTH AND WELL-BEING OF CHILDREN... AND THEIR FAMILIES**

It is a generally accepted principle that an excellent way to ensure the full development of a child and prevent possible adjustment disorders is to meet parents' needs where necessary. ENVOL provides financial help to parents who must travel outside the islands because the health of a child is at stake.

Following Research on the needs of families with young children in 1995, local community organizations and health care facilities undertook to create an assistance fund. Since 1997, Opération Enfant-Soleil has been helping raise funds for ENVOL.

### **Families eligible for ENVOL assistance**

- ◆ The child must be under the age of 18 and reside in the Magdalen Islands;
- ◆ Parents should not be receiving financial help from other sources that could cover the costs of transportation and accommodation, in particular regional health-transport programs, Leucan Foundation programs or social assistance programs;
- ◆ The annual gross family income must be below \$60,000.

**1<sup>st</sup> COMPONENT:**  
**EMERGENCY MEDICAL TRANSFER (0-17 YEARS OLD)**

**ENVOL aims to help parents defray the expenses incurred by the accompanying parent during a medical transfer of their child outside the islands.**

As part of this component, ENVOL can assist families in the following situations:

- ⇒ Upon assessment of a physician, it is decided that the child must receive health care outside the islands and should be taken by air ambulance.
- ⇒ The child requires a specialized medical assessment and is at risk of being diagnosed with a condition that could have major, long-term impacts on his/her health .
- ⇒ The child is suffering from a serious illness and his/her state of health has suddenly worsened.

*This ENVOL medical transfer component cannot be requested for repeated trips during regular follow-ups.*

**Eligible expenses**

Depending on the family situation, eligible expenses for the accompanying parent may include the following:

- ⇒ Return plane ticket;
- ⇒ Financial support for accommodation expenses (\$200/week).

**How to proceed?**

**Parents who have received medical transfer notice for their child must:**

Check their eligibility for ENVOL Assistance Funds when meeting with the officer in charge of their child's transportation particulars after which the officer in charge will contact officials at CISSS ENVOL Assistance Funds.

- ⇒ Submit the signed form to Club Voyages les Îles travel agency including the notice confirming the need for their child's medical transfer outside the islands.

**2<sup>ND</sup> COMPONENT: ASSISTANCE**  
**(PROLONGED STAYS AND REGULAR FOLLOW-UPS)**

**ENVOL aims to help parents defray the expenses incurred by the accompanying parent during a prolonged stay or regular follow-up trips.**

Expenses for the accompanying parent in this assistance ENVOL component are defrayed in the following situations :

- ⇒ **Hospitalization of a premature baby outside the Islands.**
- ⇒ Follow-up required outside the islands for a seriously ill child (e.g. leukemia, cancer...).

**Eligible expenses include**

Depending on the family situation, eligible expenses may include the following:

- ⇒ Assistance with transportation: \$300 (for the accompanying parent)
- ⇒ Financial support for accommodation expenses (\$200/week).

Because of limited financial resources, assistance may not be provided more than 3 times and should not total more than 8 weeks during one year.

**How to proceed?**

For the Assistance component, parents must contact CISSS ENVOL Assistance Funds at 418 986-2572 .

Centre intégré  
de santé  
et de services sociaux  
des îles

Québec 

CLSC/CISSS des Îles  
420, chemin Principal  
Cap-aux-Meules (Québec) G4T 1S1

Téléphone : 418 986-2572  
Télécopieur : 418 986-4911

[www.csssdesiles.qc.ca](http://www.csssdesiles.qc.ca)